


# Chapter 7 Timer Display

## 7.1 Create a new Window

Click on “New window” button  and select “Timer window”, as shown in image 7-1 and 7-2 in below.

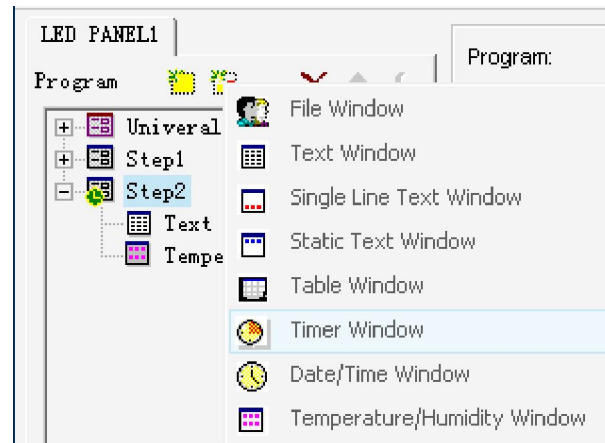


Figure 7-1




Name:	Timer Window	Frame:	Single line		
StartX:	12	Width:	64	Background:	
StartY:	6	Height:	32	<input type="checkbox"/> Lock	
Static text <input type="text"/>					
Font:	Arial	12	<b>B</b>	<u>U</u>	
End Date:	Saturday , May 01, 2010				
End Time:	8:00:00 AM				
<input checked="" type="checkbox"/> Days	<input checked="" type="checkbox"/> Hours	<input checked="" type="checkbox"/> Minutes	<input checked="" type="checkbox"/> Seconds	<input checked="" type="checkbox"/> Multi Line	
<input checked="" type="checkbox"/> No negative sign					

Figure 7-2

## 7.2 Setup Timer window

As shown in image 7-2, the upper part is for setting up program properties.

Name: program's name

Frame: setup frame and color

Starting point X: x-coordinate of the starting point

Starting point Y: y-coordinate of the starting point

Width: setup program's width

Height: setup program's height

Background: setup background color of the window

Lock: lock program window to prevent it from moving.

## 7.3 Time Setting

Please see image 7-3, options include fixed text; font style, size, bold, underline, color, etc; end date/time; display days, hours, minutes, seconds, multi line, no negative sign, etc. In this example, display result in playing window is shown in image 7-4.

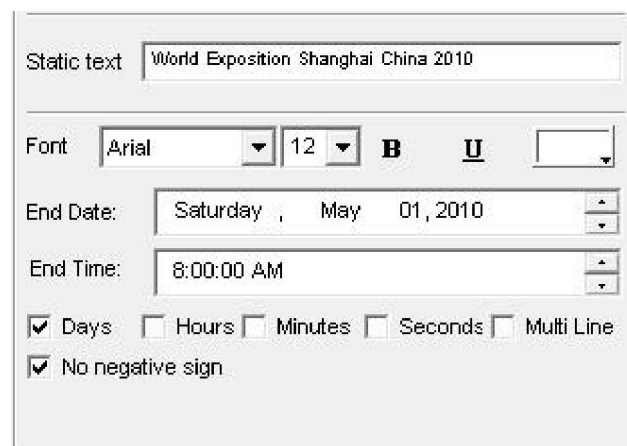


Figure 7-3

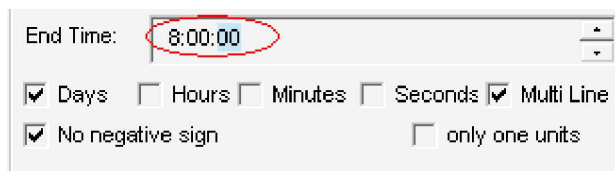


Figure 7-4

## 7.4 Special display Function 1

When display only one unit, for example, more than 24 hours, only display days; less than 24 hours, only display hours; less than 60 minutes, only display minutes; less than 60 seconds, only display seconds. Steps as follows:

Step 1: click and select ending time

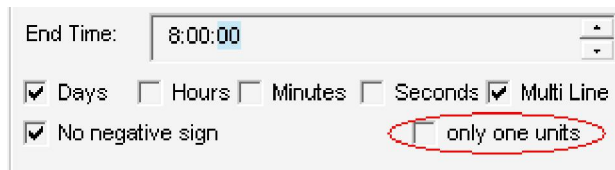


End Time: 8:00:00

☒ Days ☐ Hours ☐ Minutes ☐ Seconds ☒ Multi Line

☒ No negative sign ☐ only one units

Step 2: press F6 in keyboard, an option in dialog box will appear, as shown below:



End Time: 8:00:00

☒ Days ☐ Hours ☐ Minutes ☐ Seconds ☒ Multi Line

☒ No negative sign ☐ only one units

Step 3: tick the box before only one unit



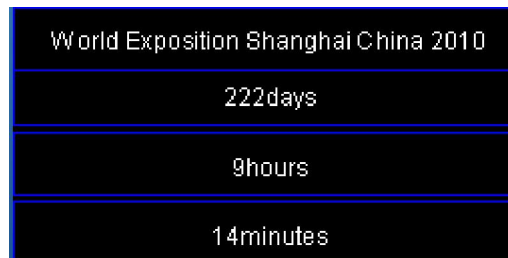
End Time: 8:00:00

☒ Days ☐ Hours ☐ Minutes ☐ Seconds ☒ Multi Line

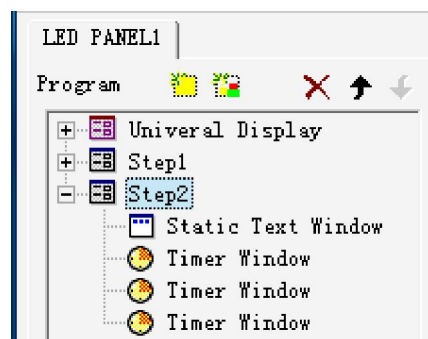
☒ No negative sign ☒ only one units

## 7.5 Special Display Function 2

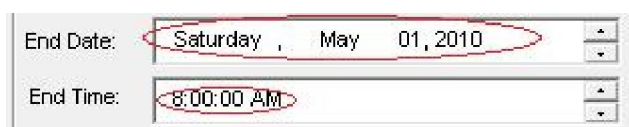
When you want to display days, hours, minutes and seconds by multi-line separately or display different fonts and colors, then you have to create multiple timer windows and select “special used by multiple timer windows”. Detail steps are as follows:



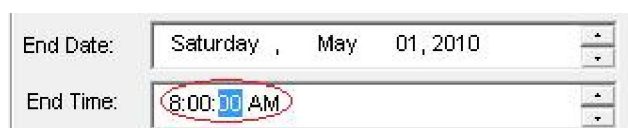
Step 1: create multiple timer windows, as shown below:



Step 2: all end time and date in these timer windows should keep consistent with each other.



Step 3: click and select end time control



Step 4: press F5 in keyboard, an option in dialog box will appear, as shown in below:

End Time: 8:00:00

☒ Days ☐ Hours ☐ Minutes ☐ Seconds ☐ Multi Line

☒ No negative sign

☐ special used by multi countdown wnd

Step 5: tick the box before special used by multiple countdown windows

End Time: 8:00:00

☒ Days ☐ Hours ☐ Minutes ☐ Seconds ☐ Multi Line

☒ No negative sign

☒ special used by multi countdown wnd

Step 6: select the unit that need to display before each box.